

Biobank Storage Temperatures

An Illustrative Guide



END USE
Composition Studies

END USE
Active component,
enzymes, antibodies

END USE
Components study,
protein composition,
vitamins, hormones

END USE
Formalin-fixed,
paraffin-embedded
(FFPE)

END USE
Structural integrity,
native not denatured,
active enzyme, active
antibody

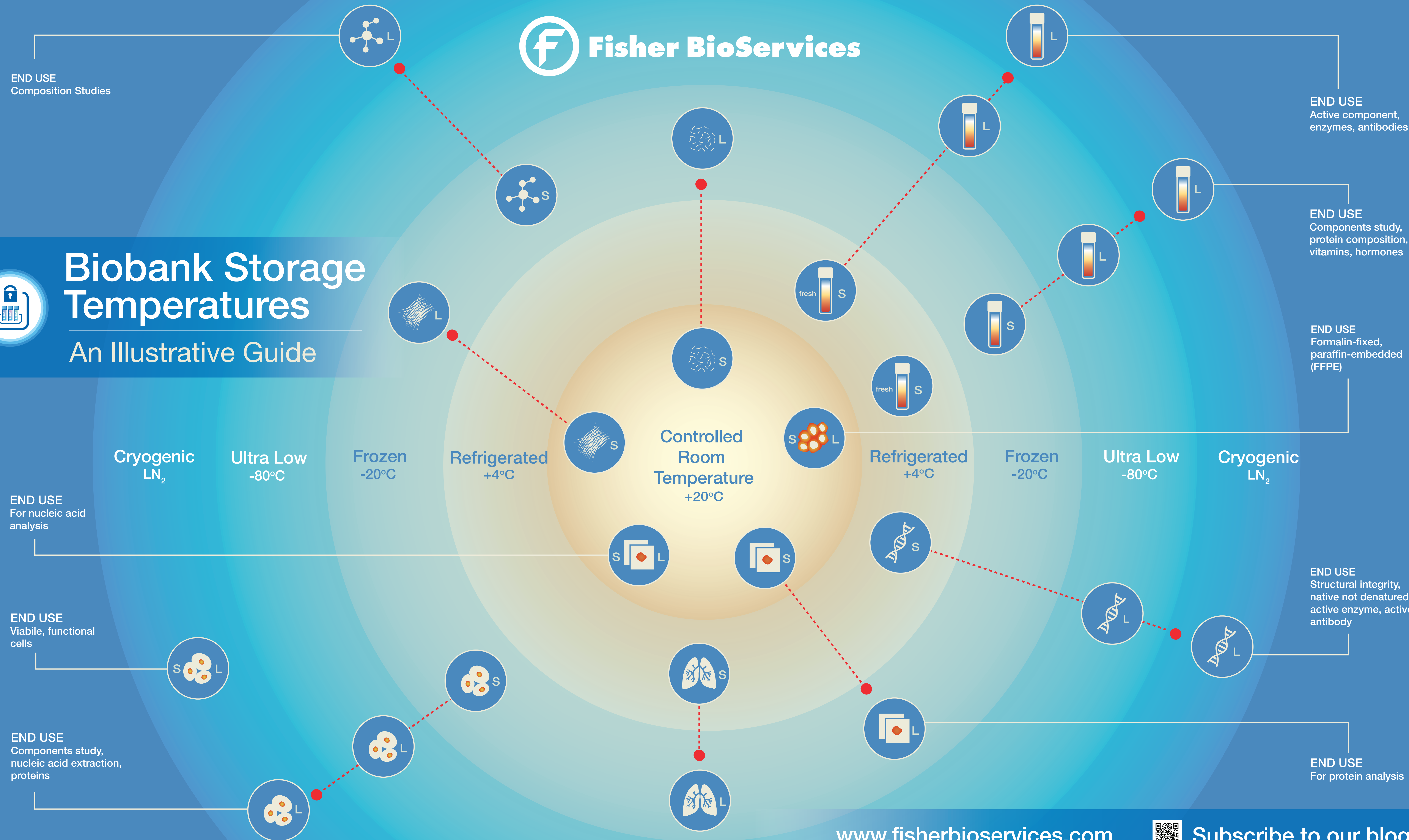
END USE
For protein analysis

END USE
For nucleic acid
analysis

END USE
Viable, functional
cells

END USE
Components study,
nucleic acid extraction,
proteins

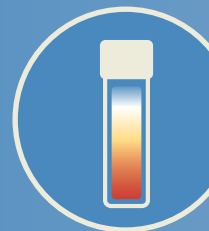
Cryogenic LN₂ Ultra Low -80°C Frozen -20°C Refrigerated +4°C **Controlled Room Temperature +20°C** Refrigerated +4°C Frozen -20°C Ultra Low -80°C Cryogenic LN₂



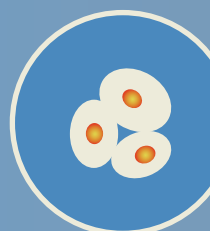
www.fisherbioservices.com



Subscribe to our blog



{ Biofluids }
Whole blood,
serum, plasma,
saliva, urine,
semen



{ Cells }
PBMC, Stem
cells, antibody-
secreting cells



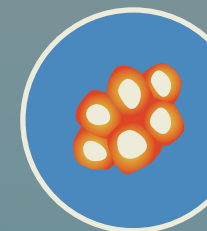
{ Molecules,
BioPharma-
ceuticals }
Steroid hormones,
nucleic acids



{ Molecules,
BioPharma-
ceuticals }
DNA, RNA,
active proteins



{ Miscellaneous }
Tissues, organs



{ Miscellaneous }
FFPE tissues



{ Miscellaneous }
Blood on filter
paper



{ Miscellaneous }
Hair



{ Miscellaneous }
Nails

S Short Term

L Long Term